



# CITY CENTRE OFFICES TO LET

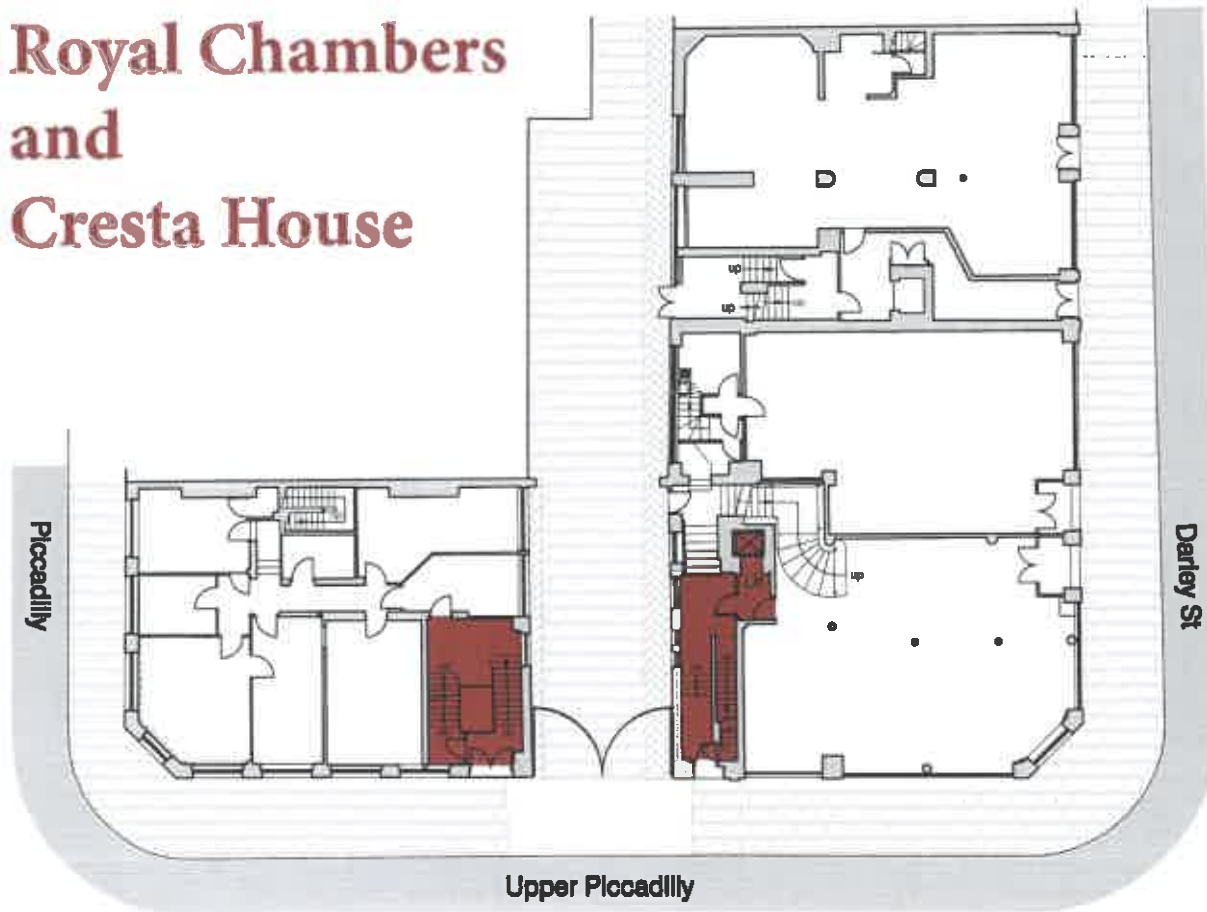
*Newly Refurbished Office  
Space to let in the Grade 2  
Listed  
Royal Chambers &  
Cresta House*

MARK  
BREARLEY  
&  
COMPANY

01274 595999

13 PARK VIEW COURT SHIPLEY BD18 3DZ

# Royal Chambers and Cresta House



*Newly Refurbished Office Space  
is now available to let in the  
Grade 2 Listed Royal Chambers  
& Cresta House in the heart of  
Bradford City Centre*

The recently completed renovation of the former Royal Hotel offers high quality office space in the city centre of Bradford:

a 10 minute walk from Bradford Interchange; and a 5 minute walk to the new Westfield shopping complex due to open December 2015.

The project has maintained the historic fabric of the building providing unique and flexible office space with various sizes available to suit all needs.



MARK  
BREARLEY  
&  
COMPANY

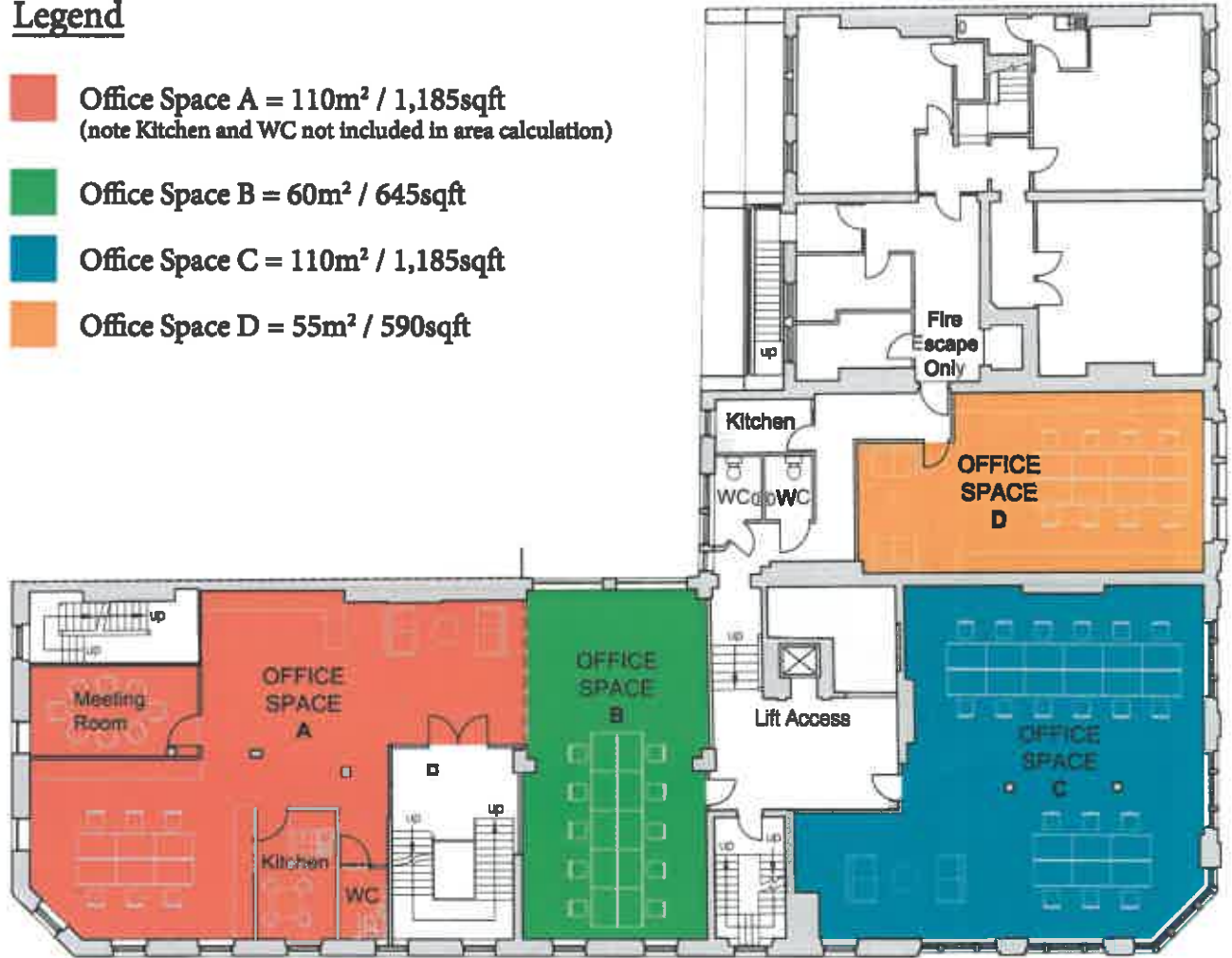
01274 595999

13 PARK VIEW COURT SHIPLEY BD18 3DZ



## Legend

- Office Space A = 110m<sup>2</sup> / 1,185sqft  
(note Kitchen and WC not included in area calculation)
- Office Space B = 60m<sup>2</sup> / 645sqft
- Office Space C = 110m<sup>2</sup> / 1,185sqft
- Office Space D = 55m<sup>2</sup> / 590sqft



**Second Floor Office Space - 1:150**

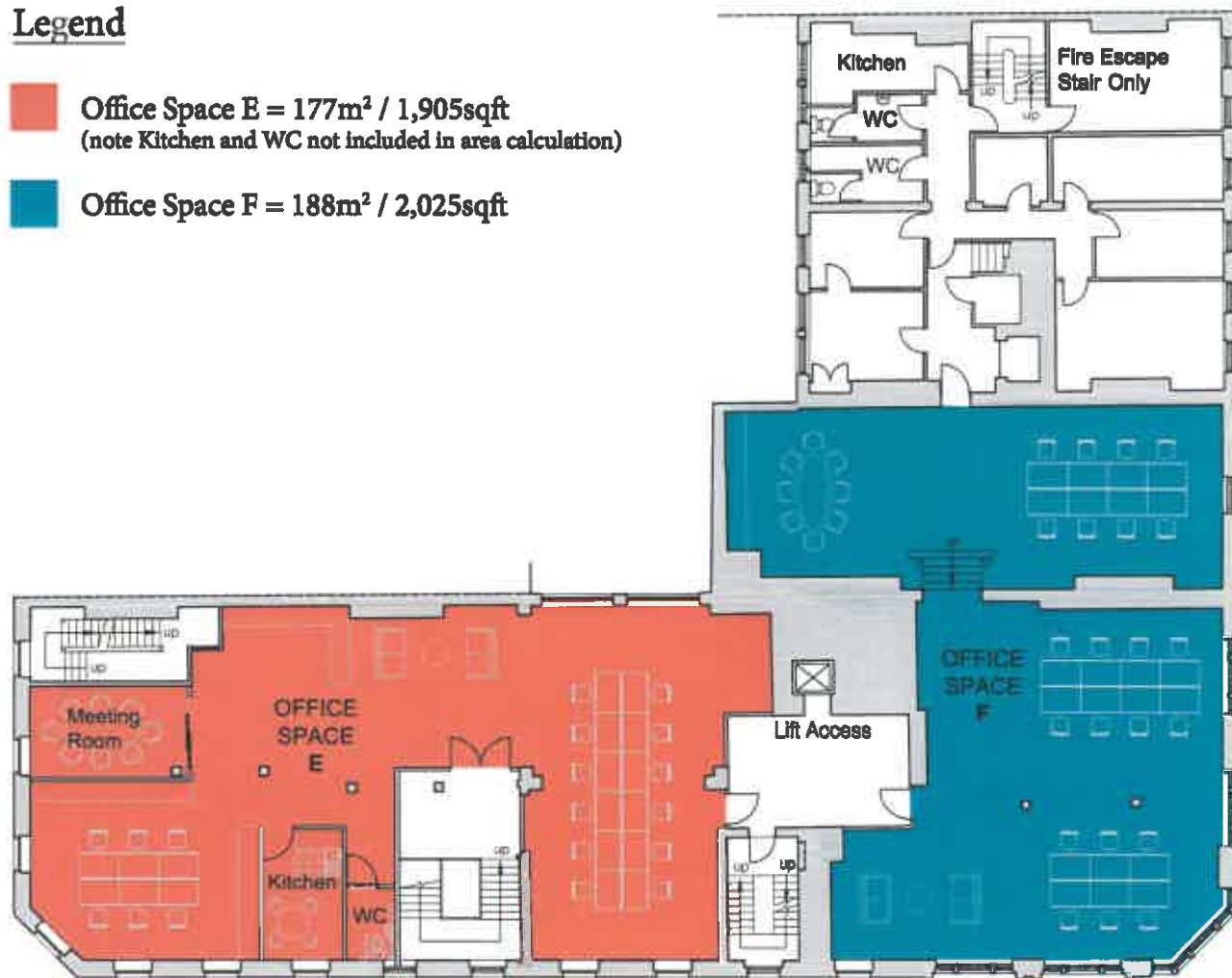




### Legend

■ Office Space E = 177m<sup>2</sup> / 1,905sqft  
(note Kitchen and WC not included in area calculation)

■ Office Space F = 188m<sup>2</sup> / 2,025sqft



**Third Floor Office Space - 1:150**

**MARK  
BREARLEY  
&  
COMPANY**

**01274 595999**  
13 PARK VIEW COURT SHIPLEY BD18 3DZ